

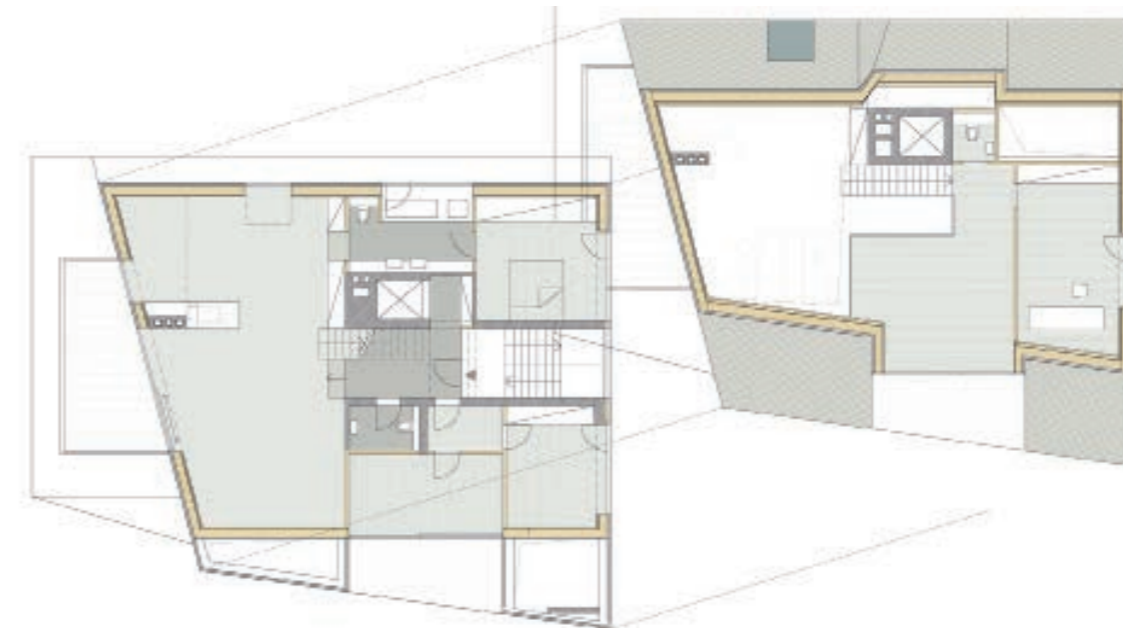
PENTHOUSE B

If black is the absence of color, then white can only be the opposite.

Architect | destilat
Interior Design | destilat
Client | confidential
Gross floor area | 200 m²
Main materials | wooden construction
Address | Linz, Austria
Completion | 2013
Number of residents | 2 adults, 1 child



Once the home of an entrepreneurial family, this building is located in a prime location with view across the city of Linz. The house was in need of renovation work and has been transformed into a modern apartment house with three residential units. The house has been remodeled from the ground up and extended with an insulated timber story. The entire volume above the base rotates slightly in order to optimize views of the surroundings. The cherry on the cake on is the penthouse with its open-plan living kitchen and dining area, a ceiling height of 6.5 meters and a gallery. There is something almost sacred about this light, tranquil space, complemented by the minimalistic furnishings and rough texture of the materials. A key feature of the space is a large open fireplace with a concrete base and clad in rough plaster.



43.2 m² living
61.8 m² sleeping
22.5 m² kitchen
10.1 m² bathroom

